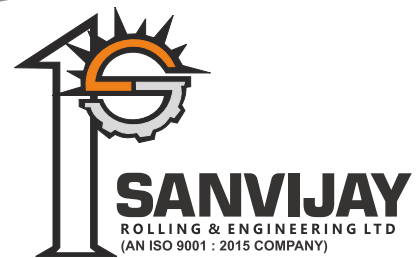


# INNOVATIVE IDEAS FOR EXCELLENT ENGINEERING



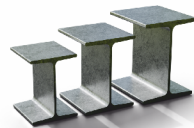
## PRODUCT RANGE



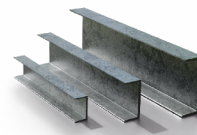
**Angle Sections**  
25x25 to 250x250



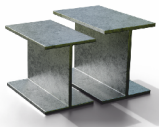
**Unequal Angles**  
45x30 to 150x115



**Beams**  
100x50 to 600x210



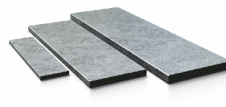
**Channel Sections**  
75x40 to 400x100



**W Beams**  
W6 and W8 Series



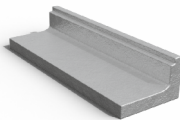
**UC / UB Poles**



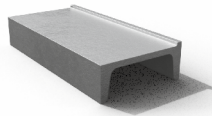
**Flat Bars**  
25x4 to 500x40



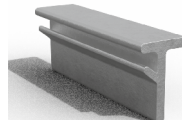
**Round Bars**  
10mm to 200 mm



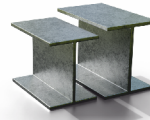
**Base Rail**  
(Railway)



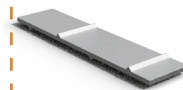
**Air Box Channel**  
(Railway)



**Edge Beam**



**ISMB / NPB**  
100-600mm



**Ribbed Flat**



For Company  
Profile

- 0.5 Million MT/ Annum Structural Steel Rolling Mills
- 100000 MT / Annum Fabrication and Galvanizing Unit.

✉ [steel@sanvijay.com](mailto:steel@sanvijay.com) 🌐 [www.sanvijay.com](http://www.sanvijay.com)

One of the Largest Long Product Manufacturer in Central India with a complete range of long products - Angles, Channels, Beams, Flats, Rounds.

Only Power Grid approved steel rollers in India for complete range of Angles from 25x25x3 to 250x250x35.

Innovator and Developer of many special sections having decades of expertise in steel rolling.

Authorised Conversion agents of Steel Authority of India Ltd., (SAIL).

American Bureau of Shipping (A.B.S) and D.N.V. approved mill for supply to ship building industries.



## MS/HT Equal Angle (All sizes approved by PGCIL)

25 x 25 mm  
up to  
250x250 mm

Any Thickness from  
3 mm to 35 mm

## MS/HT Unequal Angle

45 x 30 mm x 3 to 6 mm thk.  
75 x 50 mm x 6 to 10 mm thk.  
90 x 60 mm x 6 to 10 mm thk.  
100 x 75 mm x 6 to 12 mm thk.

125 x 75 mm x 5 to 10 mm thk.  
150 x 75 mm x 8 to 12 mm thk.  
150 x 90 mm x 8 to 12 mm thk.  
150 x 115 mm x 8 mm to 12 mm thk.

AND ALL OTHER INTERMEDIATE SECTIONS

## Flats

25 mm to 500 mm (Any thickness.)

## Rounds

10 mm to 200 mm

## Channels

Section	Kg/mtr.
75 x 40 mm	7.14
100 x 50 mm	9.56
125 x 65 mm	13.1
150 x 75 mm	16.8
175 x 75 mm	19.6
200 x 75 mm	22.3
225 x 80 mm	26.1
250 x 80 mm	30.6
250 x 82 mm	34.2
300 x 90 mm	36.3
400 x 100 mm	50.1

## Joists/Beams

Section	Kg/mtr.
116 x 100	23.0
100 x 50 mm	8.9
125 x 70 mm	13.3
150 x 75 mm	15.0
175 x 85 mm	19.6
200 x 100 mm	25.4
250 x 125 mm	37.3
300 x 140 mm	46.0
350 x 140 mm	52.4
400 x 140 mm	61.5
450 x 150 mm	72.4
500 x 180 mm	86.9
600 x 210 mm	123.0

## Wide Flange Beams

Section	Kg/mtr.
203 x 152	52.0

## Column/Heavy Weight Beam Sections

Section	Kg/mtr.
152 x 152 mm	37.1
150 x 150 mm	34.6

## Special Section

Base Rail (Railway)	Edge Beam
Air Box Channel (Railway)	Ribbed Flats

## UC Pole

Section	Kg/mtr.
152 x 152 mm	23.0
203 x 203 mm	52.0

## W Beam

Section	Kg/mtr.
W 6 x 7	10.4
W 6 x 8.5	12.6
W 6 x 9	13.4
W 6 x 10.4	15.5
W 6 x 12	17.9
W 6 x 15	22.3
W 6 x 16	23.8
W 6 x 20	29.8
W 6 x 25	37.2

Section	Kg/mtr.
W 8 x 10	14.9
W 8 x 13	19.3
W 8 x 15	22.3
W 8 x 18	26.8
W 8 x 21	31.3
W 8 x 24	35.7

## New Developed ( Beams)

HEM 100    HEM 120